



Designers win architecture awards

Two Kapiti designers have come away with national design awards at the ADNZ | Resene Architectural Design Awards.

The annual awards celebrate the very best architectural designs that New Zealand has to offer in both residential and commercial sectors.

Ben Gilpin, of Gil-Plans Architecture, won a Residential New Home between 150m²-300m² Architectural Design Award for *Ocean Road House*, in Paekakariki.

The location of Ocean Road

House provided a challenge for the designer, as it was located parallel to the beach, within a steep landscape.

The judges commended the modern, open-plan home, which captured the picturesque seaside views.

In particular, the judges found the designer made good use of a difficult site, without

compromising the quality of the design.

Graeme Boucher, of Coast Edge, won a Residential Multi-Unit Dwelling Architectural Design Award for *Aurora Apartments* in Petone.

The subtle design of this multi-unit building won over the judges who were particularly impressed with the modern glazed facade, which featured decks with panoramic views.

Glass walkways and splashes of colour helped to brighten the building, while the well-

positioned skylines maximised light throughout the rooms.

ADNZ chief executive Astrid Andersen said a designer's ability to capture the landscape was integral to good design.

"Both winning designers demonstrated how making the most of the surrounds can be the difference in a good and great project.

"One design is a luxury home

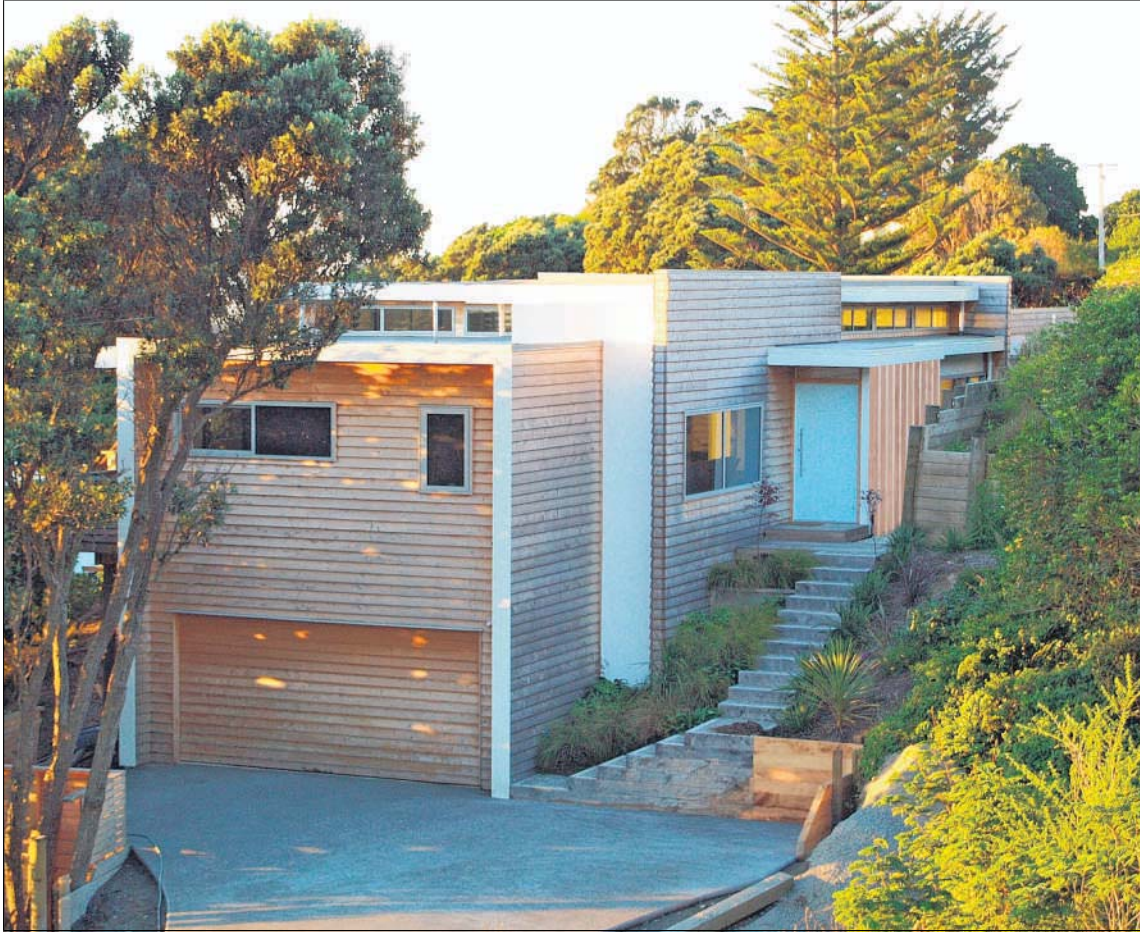
with ocean views, the other a suburban multi-unit building with a street outlook

"The important thing is the designers have maximised the views of the site and made it a focal point of the project."



WOW: Award-winning Aurora Apartments created by Coast Edge.

PHOTO: KAP301015SPLAPARTMENTS



IMPRESSIVE: Award-winning house created by Gil-Plans Architecture.

PHOTO: KAP301015SPLHOUSE